

Working image of IC EG



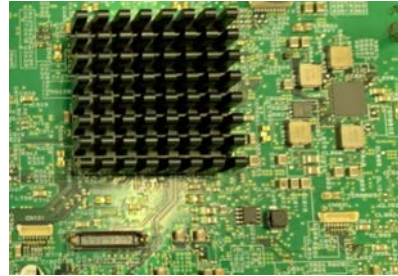
Architecture



Target Performance



Spec (Spec EG)



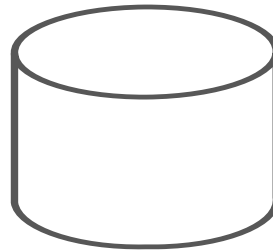
Reference Hardware (R-Car E3)



Reference Design



Create source code according to above information

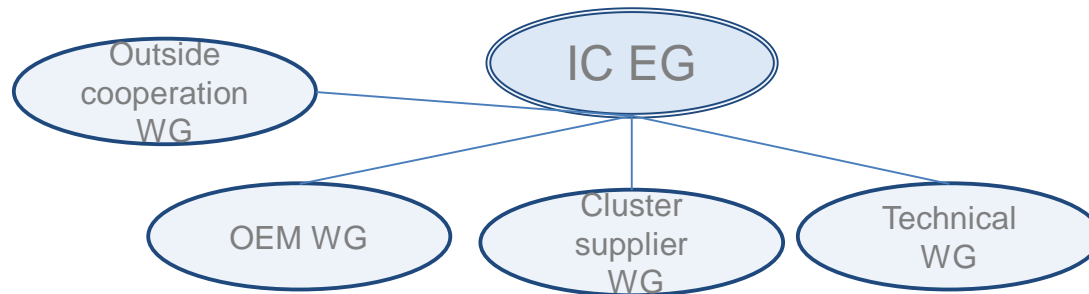


Source code

IC EG member and working structure

IC EG (once a moth)

- Toyota, Honda, Mazda, Suzuki
- DENSO, Panasonic, Continental, BOSCH, NipponSeiki, DENSO TEN, AISIN AW



IC EG member and working structure

IC EG Sub working

- OEM WG (timely)
 - Toyota, Honda, Mazda, Suzuki
 - Summarize OEM requirements
- Cluster supplier WG (timely)
 - DENSO, Panasonic, Continental, BOSCH, NipponSeiki, (Suzuki)
 - Summarize Cluster supplier requirements, technical discussion for Cluster and HUD.
- Technical WG (at least once a month)
 - DENSO, Panasonic, DENSO TEN, AISIN AW, Renesas, NipponSeiki, Suzuki
 - Technical discussion and development for general technology.
- Outside cooperation WG
 - AISIN AW, Walt, (Suzuki)
 - Cooperation working with other community. e.g.)ELISA

Responsible of IC EG items

2019			2020								
Oct.	Nov.	Dec.	Jan.	Feb.	Mar.	Apr.	May	Jun.	Jul.	Aug.	Sep.
AMM AB			CES (AB?)		AMM AB				AMM AB		ALS AB
Funding proposal		RFQ		Start of development				Code release			

- RFQ creation by : Responsible company
- RFQ review : IC EG members, SAT,SC